

FINO 3

HLD IDENTIFICATION
FINO 3

ICAO IDENTIFIER
EKFI

OSS SIDE IDENTIFICATION
FINO3

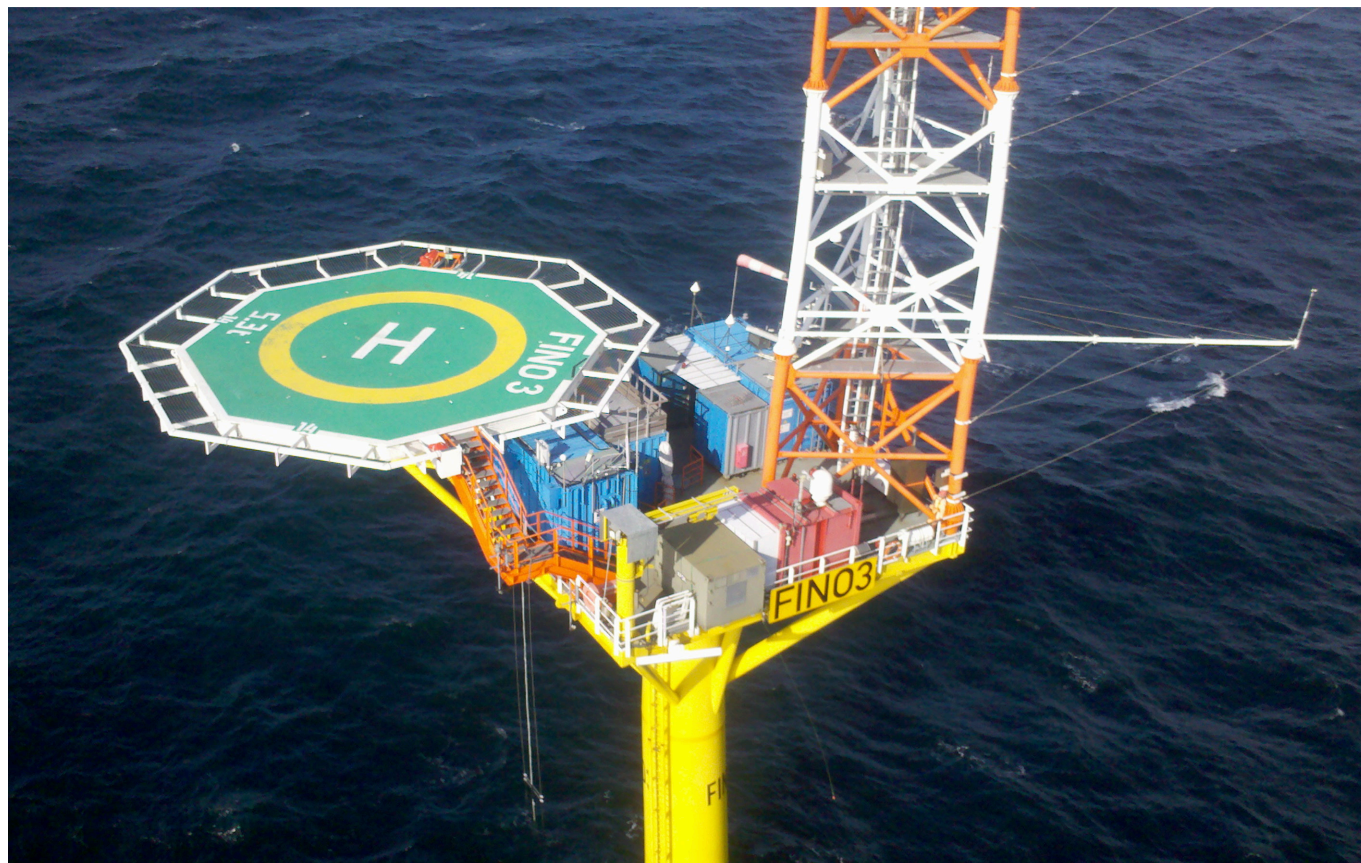
FIXED NORMALLY UNATTENDED INSTALLATION
FuE ZENTRUM FH KIEL GMBH

HLD REFERENCE POINT

N 55° 11.69'

E 007° 09.49'

COPENHAGEN INFORMATION 124.000 MHz		FINO-3-PLATFORM 131.625 MHz	
WEATHER INFORMATION N/A 7x		LIGHTING & DIMMING N/A 3x 100% 4x 30% (10%) 5x 10% (3%)	
HELIDECK HEIGHT 84 ft MSL	D-VALUE 14 m	MTOW 5,3 t	
PREFERRED APPROACH / DEPARTURE DIRECTION 090 / 270° DECK HEADING 180°			
HIGHEST OBSTACLE ON INSTALLATION 400 ft AMSL / 320 ft AHLD (ANTENNA MAST)		HIGHEST OBSTACLE IN THE VICINITY 486 ft MSL (WTG DAN TYSK)	
REFUELLING FACILITY 100l JET-A1 (EMERGENCY ONLY)	GROUND POWER UNIT N/A	LANDING NET N/A	STATUS LIGHT N/A
FIRE FIGHTING FACILITIES			
PRIMARY FIFI N/A	SECONDARY FIFI N/A	CO₂ 2 x 20 kg	DRY POWDER 2 x 50 kg



FINO 3

HLD IDENTIFICATION

FINO 3

ICAO IDENTIFIER

EKFI

OSS SIDE IDENTIFICATION

FINO3

FIXED NORMALLY UNATTENDED INSTALLATION
FuE ZENTRUM FH KIEL GMBH

HLD REFERENCE POINT

N 55° 11.69'

E 007° 09.49'

COPENHAGEN INFORMATION 124.000 MHz		FINO-3-PLATFORM 131.625 MHz	
WEATHER INFORMATION N/A 7x		LIGHTING & DIMMING N/A 3x 100% 4x 30% (10%) 5x 10% (3%)	
HELIDECK HEIGHT 84 ft MSL	D-VALUE 14 m	MTOW 5,3 t	
PREFERRED APPROACH / DEPARTURE DIRECTION 090 / 270° DECK HEADING 180°			
HIGHEST OBSTACLE ON INSTALLATION 400 ft AMSL / 320 ft AHLD (ANTENNA MAST)		HIGHEST OBSTACLE IN THE VICINITY 486 ft MSL (WTG DAN TYSK)	
REFUELLING FACILITY 100l JET-A1 (EMERGENCY ONLY)	GROUND POWER UNIT N/A	LANDING NET N/A	STATUS LIGHT N/A
FIRE FIGHTING FACILITIES			
PRIMARY FIFI N/A	SECONDARY FIFI N/A	CO₂ 2 x 20 kg	DRY POWDER 2 x 50 kg
NON - COMPLIANCES		LIMITATIONS	
<ul style="list-style-type: none"> • PERIMETER SAFETY NET EXCEEDS HLD HEIGHT • LIMITED FIFI CAPACITY • FOR FURTHER DETAILS SEE AERODROME INSTRUCTIONS 		<ul style="list-style-type: none"> • VFR DAY ONLY 	
REMARKS			
<ul style="list-style-type: none"> • OBSERVE STATUS OF DANGER AREA ED-D46 • BE AWARE OF FINO 3 ANTENNA MAST (400 ft MSL) • BE AWARE OF WTG (OWF DAN TYSK) IN VICINITY TO HELIDECK • BE AWARE FATO IS UNLIT • HLD AVAILABLE FOR INDUCTED FLIGHT CREWS ONLY 			

FINO 3

HLD IDENTIFICATION
FINO 3

ICAO IDENTIFIER
EKFI

OSS SIDE IDENTIFICATION
FINO3

FIXED NORMALLY UNATTENDED INSTALLATION
FuE ZENTRUM FH KIEL GMBH

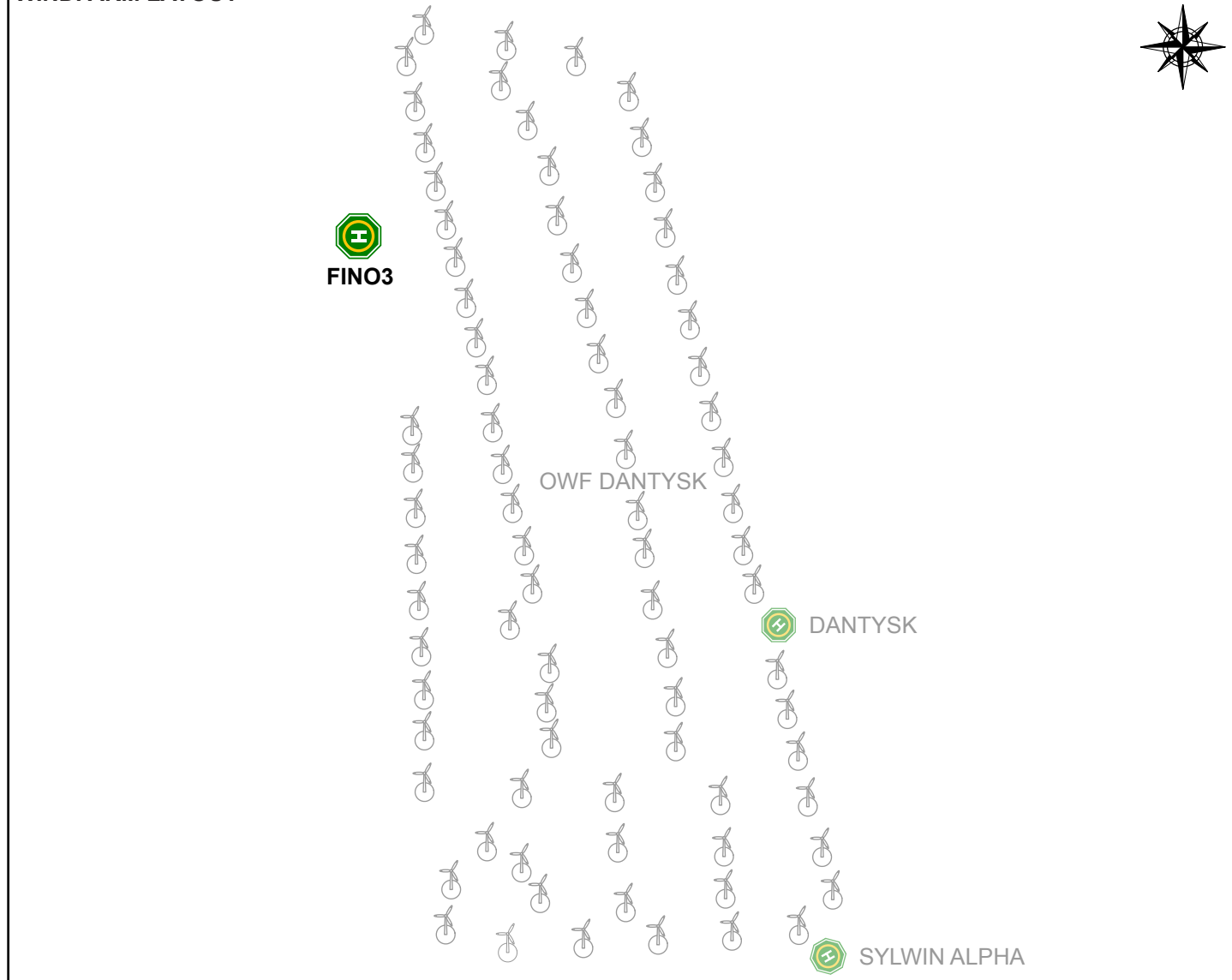
HLD REFERENCE POINT

N 55° 11.69'

E 007° 09.49'

COPENHAGEN INFORMATION 124.000 MHz		FINO-3-PLATFORM 131.625 MHz	
WEATHER INFORMATION N/A 7x		LIGHTING & DIMMING N/A 3x 100% 4x 30% (10%) 5x 10% (3%)	
HELIDECK HEIGHT 84 ft MSL	D-VALUE 14 m	MTOW 5,3 t	
PREFERRED APPROACH / DEPARTURE DIRECTION 090 / 270° DECK HEADING 180°			
HIGHEST OBSTACLE ON INSTALLATION 400 ft AMSL / 320 ft AHLD (ANTENNA MAST)		HIGHEST OBSTACLE IN THE VICINITY 486 ft MSL (WTG DAN TYSK)	
REFUELLING FACILITY 100l JET-A1 (EMERGENCY ONLY)	GROUND POWER UNIT N/A	LANDING NET N/A	STATUS LIGHT N/A
FIRE FIGHTING FACILITIES			
PRIMARY FIFI N/A	SECONDARY FIFI N/A	CO₂ 2 x 20 kg	DRY POWDER 2 x 50 kg

WINDFARM LAYOUT



FINO 3

HLD IDENTIFICATION
FINO 3

ICAO IDENTIFIER
EKFI

OSS SIDE IDENTIFICATION
FINO3

FIXED NORMALLY UNATTENDED INSTALLATION
FuE ZENTRUM FH KIEL GMBH

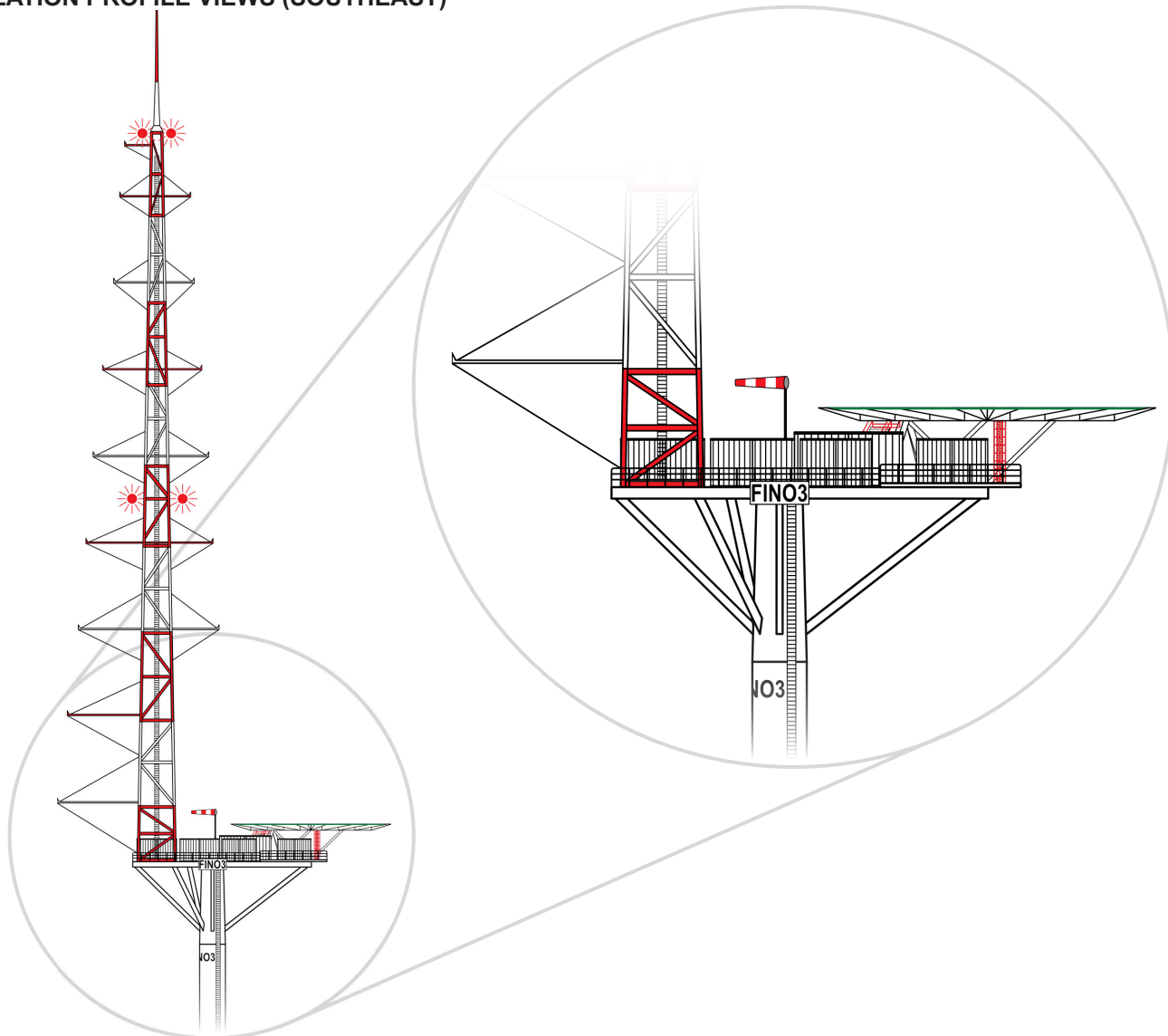
HLD REFERENCE POINT

N 55° 11.69'

E 007° 09.49'

COPENHAGEN INFORMATION 124.000 MHz		FINO-3-PLATFORM 131.625 MHz	
WEATHER INFORMATION N/A 7x		LIGHTING & DIMMING N/A 3x 100% 4x 30% (10%) 5x 10% (3%)	
HELIDECK HEIGHT 84 ft MSL	D-VALUE 14 m	MTOW 5,3 t	
PREFERRED APPROACH / DEPARTURE DIRECTION 090 / 270° DECK HEADING 180°			
HIGHEST OBSTACLE ON INSTALLATION 400 ft AMSL / 320 ft AHLD (ANTENNA MAST)		HIGHEST OBSTACLE IN THE VICINITY 486 ft MSL (WTG DAN TYSK)	
REFUELLING FACILITY 100l JET-A1 (EMERGENCY ONLY)	GROUND POWER UNIT N/A	LANDING NET N/A	STATUS LIGHT N/A
FIRE FIGHTING FACILITIES			
PRIMARY FIFI N/A	SECONDARY FIFI N/A	CO₂ 2 x 20 kg	DRY POWDER 2 x 50 kg

INSTALLATION PROFILE VIEWS (SOUTHEAST)



FINO 3

HLD IDENTIFICATION
FINO 3

ICAO IDENTIFIER
EKFI

OSS SIDE IDENTIFICATION
FINO3

FIXED NORMALLY UNATTENDED INSTALLATION
FuE ZENTRUM FH KIEL GMBH

HLD REFERENCE POINT

N 55° 11.69'

E 007° 09.49'

COPENHAGEN INFORMATION 124.000 MHz		FINO-3-PLATFORM 131.625 MHz	
WEATHER INFORMATION N/A 7x		LIGHTING & DIMMING N/A 3x 100% 4x 30% (10%) 5x 10% (3%)	
HELIDECK HEIGHT 84 ft MSL	D-VALUE 14 m	MTOW 5,3 t	
PREFERRED APPROACH / DEPARTURE DIRECTION 090 / 270° DECK HEADING 180°			
HIGHEST OBSTACLE ON INSTALLATION 400 ft AMSL / 320 ft AHLD (ANTENNA MAST)		HIGHEST OBSTACLE IN THE VICINITY 486 ft MSL (WTG DAN TYSK)	
REFUELLING FACILITY 100l JET-A1 (EMERGENCY ONLY)	GROUND POWER UNIT N/A	LANDING NET N/A	STATUS LIGHT N/A
FIRE FIGHTING FACILITIES			
PRIMARY FIFI N/A	SECONDARY FIFI N/A	CO₂ 2 x 20 kg	DRY POWDER 2 x 50 kg

INSTALLATION TOP VIEW

